

Positive outlook for Austin at home and abroad

2010 has been a challenging year for our industry, but I am pleased that Austin has performed very well during this period.

Although construction activity has reduced I can report that design releases plus enquiries, have risen which gives us a large measure of confidence for continued success for the coming year. This positive outlook for the future enables us to seek well qualified technical and management staff on a continuing basis.

Another encouraging feature of our workload is the amount of international work we have recently been able to secure. With the help of our associate office in Singapore we have been successful in obtaining design work for the chemical / pharmaceutical industries in Jakarta and Korea. In the future we will be aiming to enhance our activities in these areas.

Again I have to thank our engineering, construction and management staff for the outstanding efforts this year and look forward to further success with confidence.

I would also like to thank our existing and new customers for their support and look forward to continuing our successful association with you.



Prakash Davda, Managing Director

Cadbury QA Laboratories, Bournville Historic site goes state-of-the-art



Due to increased pressures on their existing quality assurance laboratory, Cadbury turned to Austin to design and construct a new state-of-the-art facility. This will provide both a QA focus and “Centre of Excellence” at the company’s existing historic chocolate manufacturing site at Bournville.



The new 1,400m² facility will increase throughput and include multiple laboratories to undertake different activities whilst maintaining the required control and segregation. It complies with the latest QA principles and the latest regulatory standards. The facility is physically separate from the main manufacturing complex and capable of future expansion.

Dr Arthur Day, Cadbury Project Manager, said “Austin was selected to provide design and construction services because of its acknowledged experience of best practice in providing quality laboratory facilities to match the user needs.

Austin completed the project on time and within budget working in cooperation with Cadbury. This ensured that critical ongoing site operations were maintained without disruption during the works.”

On completion of the QA Laboratory, Austin has been released on a further assignment to develop additional space requirements on the site in Bournville.

New conference centre gets ready for business



This repeat customer turned to Austin to design and construct a new conference centre on its site at Hoddesdon.

The project is a fit-out within an existing building, the space previously occupied by warehousing.

This corporate facility includes four 30-person conference rooms each with moveable acoustic walls

to allow a combination of room sizes or a fully open space for large theatre style presentations.

The suite also includes six syndicate rooms and two additional training rooms. The conference facilities are supported by a large breakout space which can be configured as a coffee and hot food serving area for delegates. An independent reception and toilet facilities complete the Centre.

A walk-on deck provides access to existing services with new mechanical and electrical systems to be installed. The deck also provides a robust solution to the requirement for a high level of acoustic separation to each of the spaces.

The interior design reflects the corporate branding initiatives that Austin and the client have been developing as part of a site wide Workplace Enhancement Strategy.

Austin goes North

Austin has recently completed two projects for a repeat client in Newhouse, Scotland.

An existing laboratory has been converted to a UHTS Robotics Suite. A further laboratory was transformed into a Robotics Suite and office support space.

The second project provided the Client with a new state-of-the-art sample store, the samples being used in biological tests to assist in the discovery of new medicines.

Both projects have met their objectives and it adds to Austin's success on this site over the last ten years or so.



Another positive result!

A leading provider of fully integrated and cost efficient pharmaceutical development and custom manufacturing services to the international healthcare industry, commissioned Austin to provide validation support services.

The client was due to be inspected by the MHRA so Austin provided assistance in the preparation of validation documentation prior to the inspection which had a positive result.

New faces, more capability!

Due to the exciting prospects for Austin in the immediate future, a number of new people have recently joined the company. These include:

Kris Klamut	Senior Structural Engineer
Oliver Dixon	Mechanical Engineer
Mark Roberts	Electrical Engineer
Rene Sajan	Project Manager
Jas Bharj	Project Manager
Neil Macleod	Senior Architect
Stephanie Brattesani	Interior Designer

We welcome them all to Austin and wish them well in the furtherance of their careers. Austin is always ready to employ high quality and experienced personnel, so if you are interested, please contact us.

International News

New horizons for operations at Austin

Austin has a history of working internationally over many years and is pleased to be able to report work in progress for a number of overseas high profile companies. Projects have ranged from a chocolate manufacturing plant in Argentina, solid dose manufacturing facilities in Bulgaria to a complete automobile assembly plant in Russia.

Singapore

Our associate office in Singapore which is managed by Steve Blencowe, a long time Austin manager, is supporting our work in Asia. Steve has over 20 year's experience with Austin, having started as a business development manager in our Australian office located in Sydney.

Steve moved to Singapore in 2001 to establish the Austin office which operates across South East Asia.



Korea

Austin is working on the site-wide planning and design of a new vaccine manufacturing facility in Korea. The plant will be a dual purpose unit to deal with commercial production and also contract manufacturing. The design will meet the local current regulatory compliance requirements (KGMP), Europe (EU-GMP) and USA (cGMP).

The facility will contain API manufacturing, finished product manufacturing, quality control, quality assurance, automated product cold store, administration areas and support, waste water treatment, warehouse, packaging and shipping areas.

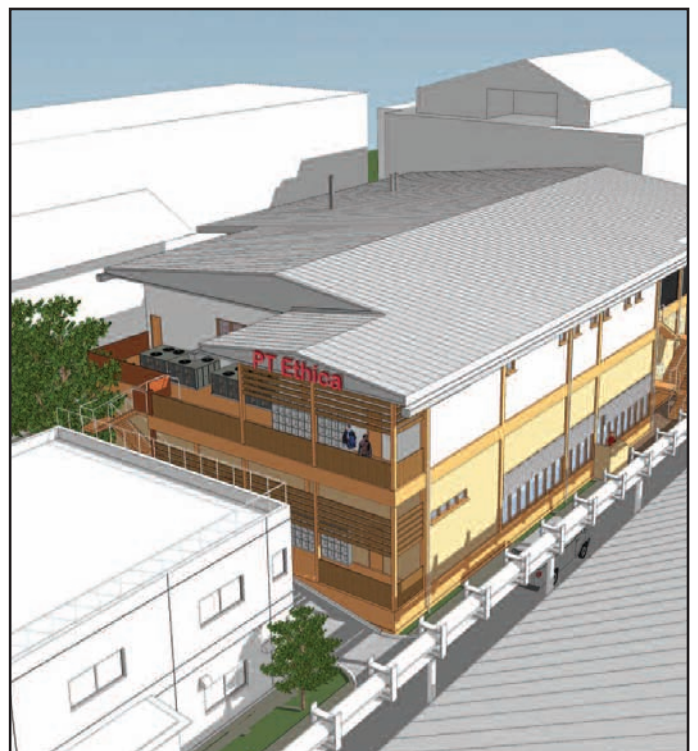
Indonesia

Due to an urgent requirement to increase production and maintain local regulatory compliance, SOHO Group Manufacturing in Jakarta commissioned Austin to develop and design a 2,400m² sterile (injectables) production facility adjacent to its existing sterile manufacturing plant.

The design allows for future expansion, greater reliance on automation, room pressure cascades with a walk-on ceiling system to aid maintenance, thus reducing the risk of unplanned shutdowns.

In addition to this, Austin has undertaken a review and upgrade design for SOHO Group Manufacturing's existing Cephalosporin manufacturing operations.

A further commission will undertake a master plan study. The aim of this is to identify areas for consolidation and more effective use of facilities. This will introduce efficiency savings to align existing facilities with projected business requirements.



Two New North East Commissions

- Austin has been commissioned to carry out a concept/feasibility study for a new office development in the North East.

The proposed accommodation is to be built in three phases on a brown field site, with the first phase housing approximately 100 personnel.

The completed development will additionally incorporate a reception area, a restaurant and a gymnasium. The facility will be designed to achieve a BREEAM rating of “Very Good”.

- A major international R&D and manufacturing organisation has engaged Austin to assist them in considering options to relocate the existing Head Office function.

Austin has been working closely with the client to test the feasibility of using existing buildings and developing a design that provides a stimulating high profile and flexible work space.



Aberystwyth University

Following the completion of the detailed design of new laboratory and glasshouse facilities within a £25M investment programme, Austin is continuing with design support directly with the successful main contractor.

Research Upgrade

Austin recently commenced site construction work on a refurbishment project for a college of the University of London.

The project has a number of significant challenges due to the age of the building (over 100 years old). These include: the location of the construction area is on the top floor of the six storey building and in Central London, with restricted access.

The building will be occupied and fully operational throughout the life of the contract and is required to meet the exacting standards of the regulatory authority.

The refurbished facility has also been designed by Austin and will provide modern accommodation to support the university's research activities.

Quotient Clinical, Nottingham

Austin is employed on a consultancy basis to project manage a pre-determined design, cost and the construction processes of the appointed sub contractors, in the refurbishment of pharmaceutical development laboratories and the creation of an expanded good manufacturing practice (GMP) suite.

Additional works include the refurbishment of existing offices and clinical areas.

ConvaTec

Austin has provided a technical review and preliminary design to upgrade building services with particular reference to Health & Safety control issues.



News in Brief

Cranfield University

Cranfield University contracted Austin to carry out non-intrusive site surveys of the existing fire detection and alarm systems in two of their engineering faculty buildings and the management faculty building.

Austin then submitted reports detailing their present state of compliance with applicable Regulations and Standards.

The main purpose was to firstly verify the findings of a recent independent Safety Survey which identified a need to provide additional detectors in the buildings and secondly to identify if there are any shortcomings in the present system configuration with regard to regulatory compliance.

Genzyme

Austin is delighted to assist Genzyme at their Haverhill site with the design and implementation of modifications to their facility by undertaking upgrades, both to the interior and the exterior.

Japanese Pharma Contract

This new client has asked Austin to act as construction manager to fit-out a number of fallow areas in their new facility for conversion into up to date laboratories.

Oxford Innovation

Oxford Innovation recently appointed Austin to carry out a study to introduce energy savings to a planned conversion of a traditional high energy use laboratory facility into office accommodation.

Key areas were examined to deliver a dramatically reduced energy consumption, reduced ventilation and introduce renewable energy systems such as solar hot water, ground source heat pump, combined heat and power, wind turbines, photovoltaic and biomass boilers.



The Austin Company
Cardinal Point, Park Road
Rickmansworth, Herts WD3 1RE
T: 01923 432658 F: 01923 432795
enquiries@austin.co.uk www.austin.co.uk

Other News

in aid of

CANCER RESEARCH UK



Austin Cancer Fundraising Appeal

After working for Cancer Research UK two years ago, Austin made a commitment to raise money through a matched funding appeal. For every pound donated by an Austin supplier, the company donates an equal amount.

This is still running and to date this really worthwhile appeal has raised **£2,600**.

Austin successfully undertakes new Cancer Research project

Following the previous successes with Cancer Research UK, Austin was commissioned to undertake a design study for a new bioinformatics laboratory and main server room fit-out project at the Li Ka Shing Centre at Cambridge.

The new unit will replace the operations within the building and will provide much greater capacity to deal with the increasing data generated by their research.

University of Exeter

Another University has asked Austin to perform a peer review on an existing laboratory facility with a view to upgrading the unit, particularly the M&E services.

M&E Consultancy Services

A leading specialist company dedicated to creating medical technologies for ostomy and wound care asked Austin to provide M&E design services for one of its major manufacturing sites. The work involved the inspection and review of the existing installation and a report on works to be carried out to meet the client's specific operational needs.

Austin is now carrying out the detailed design and construction management of the works.

